



A Modern Rustic Colorado Log Home

Nestled on 35 acres in a remote Colorado mountain setting, this handcrafted log home by GreatLand Log Homes is situated perfectly among the aspen groves and pine trees at 9,000 feet in elevation.



ABOVE: Expansive decks, covered porches and balconies allow for an outdoor living experience year-round.

TOP RIGHT: This large diameter Douglas Fir handcrafted log home provides a place of solace among the aspen trees in this natural mountain setting.

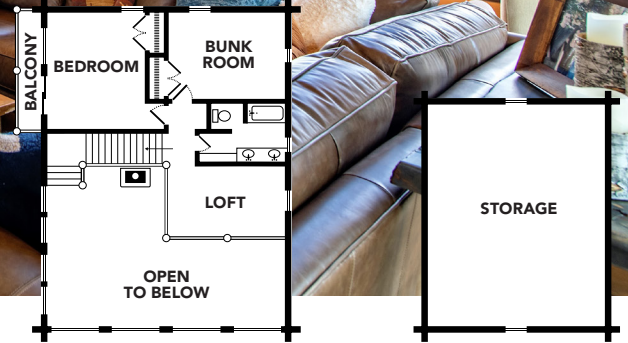
RIGHT: A combination of sidings on the garage and dormers and rusted metal wainscot on the foundation complement the main log home.



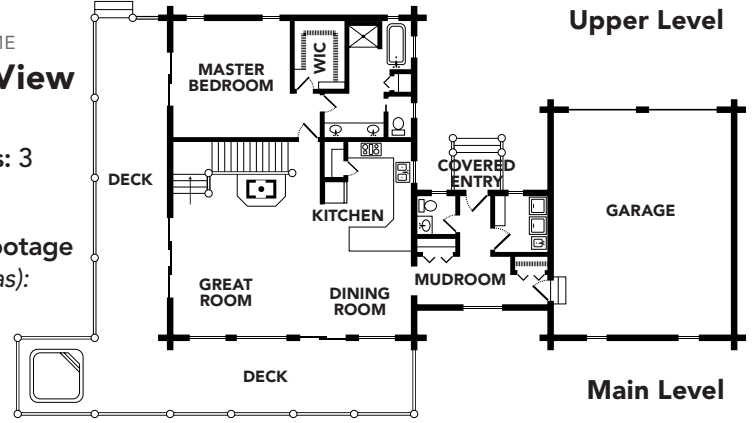
Nestled on 35 acres in a remote Colorado mountain setting, this handcrafted log home by GreatLand Log Homes is situated perfectly among the aspen groves and pine trees at 9,000 feet in elevation.

The owners initially fell in love with one of GreatLand's standard models, the MountView XL-G, but required that each of the spaces be enlarged to make a more expansive version. The plan modifications were done by GreatLand's in-house design

team, and the end result became the MountView XXL-G, which includes 2,500 square feet on the main and upper levels of the log home. Once the basement and garage spaces are added the overall size is 5,000 square feet. Interior finishes combine modern and rustic aspects to merge the best of both worlds. Wide plank hardwood flooring was used along with natural stone on the floor-to-ceiling wood burning fireplace. Expansive views are captured using large picture windows



Upper Level



Main Level

MODEL NAME

MountView XXL-G

Bedrooms: 3

Baths: 2.5

**Square Footage
(living areas):
2,444**

in between log members in the Great Room on the main level and gable.

Sustainably harvested premium logs are used for all GreatLand Log Homes packages. Douglas Fir is the primary log species used in most locations. Western Red Cedar logs are also available for use in building locations with high humidity levels and as character logs because of their unique flared root bases. To complement the superior qualities of the large diameter 14"-16" logs, structural insulated panels (SIP panels) were utilized to provide a highly insulated roof system that perfectly accompanies the thermal mass benefits of the logs. Additionally, Pella wood windows and doors were provided by GreatLand as another high-performance aspect of the home to ensure maximum thermal efficiency.

GreatLand Log Homes is known nationwide as a premier custom log home builder that specializes in hand-crafted, full-scribe log home and dry-in packages. The team at GreatLand

Log Homes has spent over 31 years fine-tuning their craft and enjoys working hand-in-hand with each customer to tailor their log home specifically for their needs and the exclusive features of their property. Their love of logs and heavy timber, and a passion for architectural design and engineering, makes GreatLand a distinct design-build company that takes each project from concept through the completion of the log package.



888-641-0496

Info@GreatLandLogHomes.com

GreatLandLogHomes.com