

# High Altitude Hybrid Log Home

Nestled at 9,200 feet, overlooking one of Colorado's premier high elevation lakes, this handcrafted log home by GreatLand Log Homes couldn't be in a more perfect setting.

The owner's dream was to create a unique, one-of-a-kind log home utilizing a combination of log construction and modern building methods – a hybrid log home. This distinctive structure blends conventional handcrafted log construction,

log post and beam elements and traditional framing along with high performance, energy efficient materials in the foundation, floors, walls, roof and exterior doors and windows.

The foundation was formed with an ICF (insulated concrete form) foam

foundation system which gives the basement level higher insulating and thermal mass values. The subfloor and roof system structures were designed with engineered lumber (a combination of I-joists, LVLs and LSL rim board). Steep pitched roof lines were combined with





SEE ANOTHER FLOOR PLAN BY GREATLAND LOG HOMES ON PAGE DREAM HOME 19.

large overhangs on all sides of the house to help shed snow and protect the exterior walls in the winter while providing abundant shade in the summer. Wood/clad exterior doors and windows were combined with high-altitude, insulated Low “E” glass to maximize efficiency. Massive windows were designed into the Great Room prow walls to capitalize on the views of the surrounding mountains and lake as well as gain passive solar heat.

The real highlight of this extraordinary custom home is the handcrafted log work by GreatLand Log Homes, a design/build log home company out of Colorado that provides log pack-

ages and dry-in packages throughout the country. Large diameter Western Red Cedar logs with flared ends were used throughout the home, creating a captivating design element. The average midspan diameter of the wall logs and beams is 16 inches while the flared log ends exceed three feet in diameter. The owners requested that the main log post in the Great Room be a “character log” so the team at GreatLand used a 42 inch diameter mammoth flared end cedar log to serve as the focal point in this area. The entire roof structure was built with even larger flared end logs to proportionally finish out this impressive log home.

**FAR LEFT:** Massive Western Red Cedar logs with flared ends highlight this hybrid log post and beam design.

**ABOVE, LEFT:** The warmth and beauty of the Western Red Cedar logs are complemented by natural stone.

**ABOVE:** The “hybrid” log post and beam frame is completed on site.

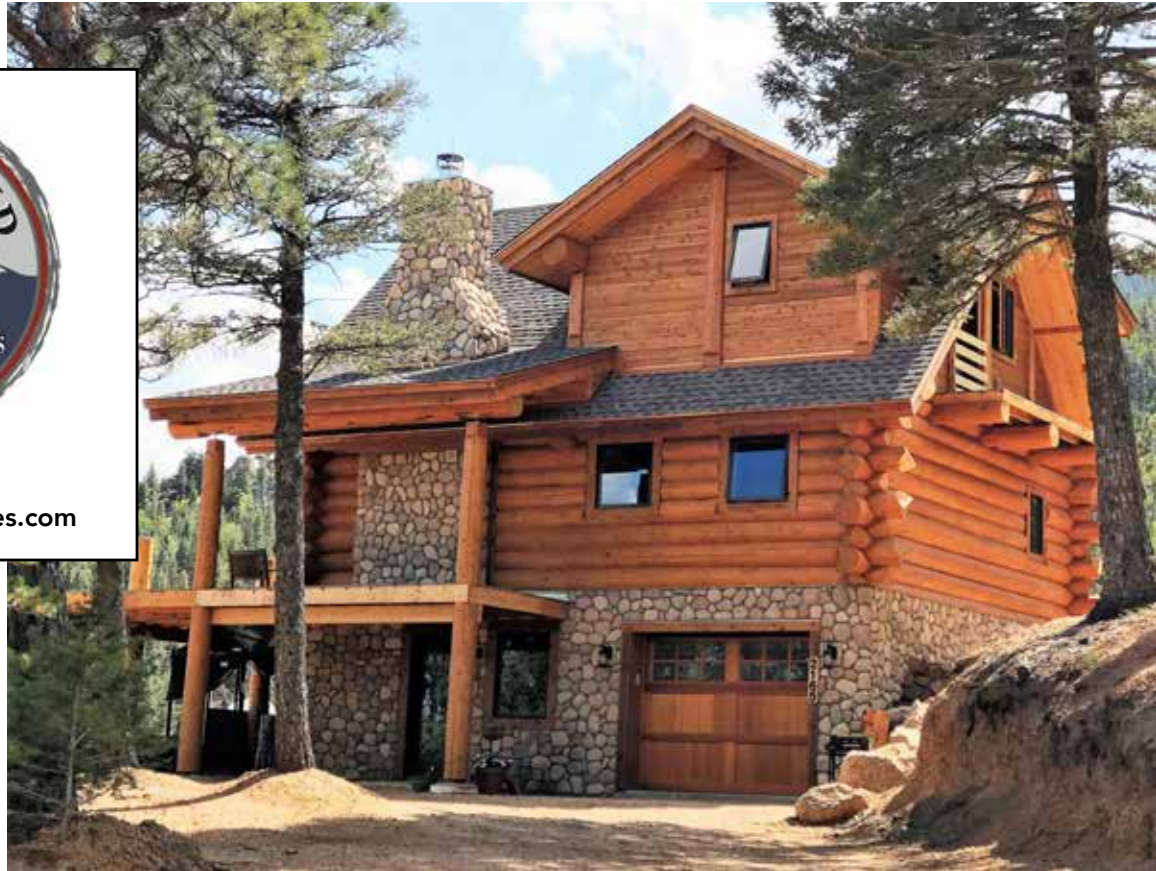
**TOP:** The main Great Room character log is a 42 inch diameter flared end cedar post.



www.GreatLandLogHomes.com  
888-641-0496



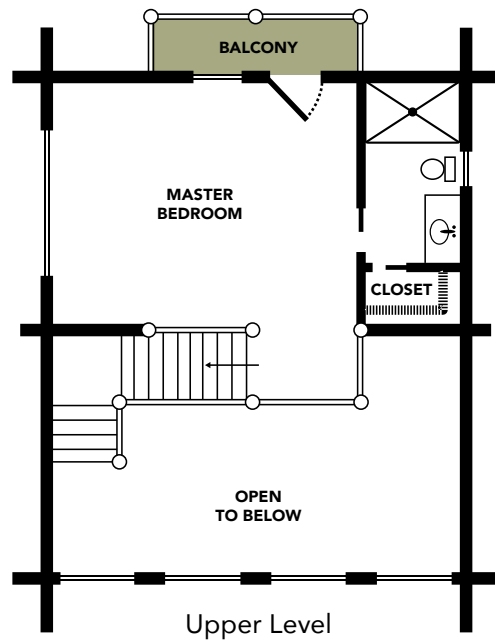
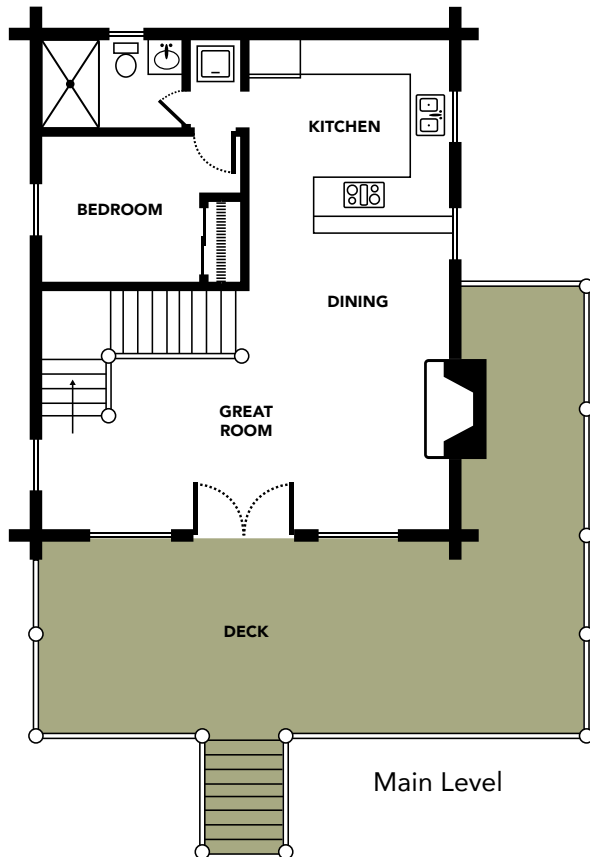
888-641-0496  
www.greatlandloghomes.com



MODEL NAME

## Boulder II

Bedrooms: 2  
Baths: 2  
Square Footage: 1,212  
(optional basement 750)



For feature article by  
GreatLand Log Homes,  
see Dream Home 10.